

LILYSILK'S FAVORITE WINTER 2022 SILK STYLES FOR EVERY HOLIDAY OCCASION

The holiday season is finally here, and there's so much we're looking forward to: cue glamorous evenings with friends, gatherings with family, chic soirees and confidently stepping out in our most celebratory attire. This is the season for luxe style, romantic silhouettes and spotlight-worthy outfits that make this the most wonderful (and best dressed) time of the year!

Looking for inspiration on what to wear for this season's social calendar? You've come to the right place. LILYSILK has you covered with silk styles for every winter occasion, from special celebrations and posh parties, to timeless silk blouses you'll treasure this season and beyond. Read on for our favorite selection of Winter 2022 silk styles for every setting.

For Your After-Hours Holiday Office Soiree



The Armeria Lace Blouse

A timeless combination of silk and lace, the Armeria Lace Blouse 9875 is a classic piece that you'll reach for season after season. We love this look for a posh end-of-year office soiree, where the glossy sheen of the 22 momme charmeuse silk feels festive and easily transitions from daytime to evening when paired with wide leg trousers or a silk skirt. Lace detailing on the sleeves, mother of pearl buttons and a concealed placket give this sweet blouse a subtle vintage vibe, while the creamy lily white color is perfect for pairing with your winter whites.

For Your Gatherings with Friends and Family





The Cervina Blouse

Holiday celebration with friends and family on the calendar? Opt for a luxe pullover like our Cervina Blouse 9876 for an easy-to-wear style that's effortlessly elegant and oh-so comfortable. We love this look for the stretch double georgette fabric crafted from 90% silk and 10% spandex, giving it added elasticity, wrinkle-resistance and draping, so you can look as good as you feel. We envision this retro-inspired blouse with trousers in light neutral tones and a pretty necklace that lets the v-neckline shine. To add cozy appeal, drape your favorite chunky knitwear over your shoulders for a practical and polished holiday ensemble that exudes off-duty elegance.

For The Upscale Party of the Season

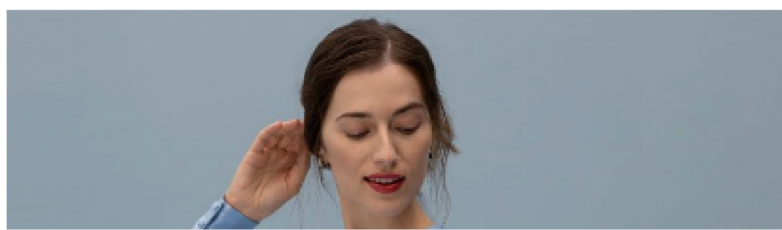


The Aster Dress

Whether hosting or toasting, capture the attention of everyone in the room in a spotlight-worthy silk halter gown. Our Aster Dress 9873 dials up the drama with an open back and

glamorous silhouette in 22 momme crepe satin for iconic luster and sheen. For added sultry appeal, the skirt of this dress is spliced with 10 momme chiffon for subtle touches of translucence that filter the light and enhance your every movement. An iconic choice for dancing the night away, wear this luxe number at a glamorous party, while giving an elegant champagne toast at a sophisticated celebration or attending an annual holiday ballet.

For Your Holiday Date Night





The Linaria Wrap Dress

There is something incredibly romantic and feminine about a classic silk wrap dress. Between the tie waist, gently puffed sleeves and pleated skirt practically made for twirling beneath holiday lights, the Linaria Wrap Dress 9872 is a pretty choice for a dreamy winter date night with your special someone (don't forget the mistletoe!). Select the sky-blue color for a soft winter look that will carry you into spring and beyond, or opt for navy for a timeless outfit you can transition from workwear to eveningwear with the simple swap of a statement heel and handbag.

This Holiday Season, Give the Gift of Living Spectacularly

At LILYSILK, we're committed to helping you and your loved ones Live Spectacularly with quality products that are gentle on your skin, and on the planet. It's part of our promise to help you look and feel your best with versatile pieces meant to enhance your wardrobe and your everyday life, from special occasions to the everyday moments in between. This holiday season, whether you're selecting gifts for loved ones or treating yourself, we're here to help you celebrate sustainably with timeless styles designed with the wellbeing of people and the planet in mind.

CREATING A CAPSULE WARDROBE: FIVE SILK ESSENTIALS FROM LILYSILK'S FALL 2022 COLLECTION

When it comes to practicing conscious fashion, a capsule wardrobe is a great way to invest in quality pieces, easily style looks and save time getting dressed.

But what exactly is a capsule wardrobe? A capsule wardrobe is a collection of essential clothing pieces that can be mixed and matched to create multiple looks. The key to a successful capsule wardrobe is to choose timeless, versatile pieces that can be dressed up or down depending on occasion, and pair well with a variety of items in your wardrobe.

Looking to add to your own capsule wardrobe this season? Read below to learn how we're styling five of our favorite essential silk pieces from LILYSILK's Fall 2022 collection:

The Perfect Fall Layering Piece: Meet the 'Shacket'

Looking for a transitional fall top that moves flawlessly between smart workwear and weekend meetups with friends? Say hello to the 'shacket' (shirt + jacket). Our Myrtus Jacket blends the classic style of military-inspired fashion (take note of the functional pockets and a buckled belt at the waist) with the tailored softness of silk charmeuse. Layer the Myrtus Jacket with knitwear for brisk fall outings, or wear open over a sleek slip dress for a look that's easy-to-wear and instantly chic.



The Alpina Blazer

Elevate Your Essentials with a Silk Knitted Dress

A figure-flattering dress with feminine flare, the Silk-Knitted Armeria Dress is crafted from 100% silk with beautiful draping and luxurious softness. An effortlessly elegant piece perfect for cooler temperatures, you'll reach for this essential dress for years to come thanks to the stretch and breathability of the silk-knit that's soft as it is stylish. To style, simply cinch at the waist with a belt and pair with a chic pair of heels and your favorite structured handbag. Effortlessly elegant, this is the perfect essential for work, vacation and any stylish occasion in between.





Silk-Knitted Armeria Dress

A Romantic Skirt for Every Occasion

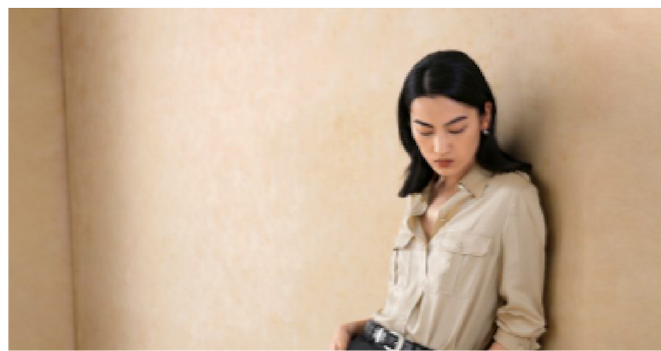
A versatile piece that's anything but basic, the Valerie Skirt is an elegant addition to any capsule wardrobe. Soft silk charmeuse flows beautifully, while the creamy color adds a touch of romance no matter how you style it. An oversized hemline on this umbrella skirt is flattering and comfortable, giving you more reasons to reach for this silhouette again and again. Daytime styling is made simple with a basic white tee and espadrilles, front-tucked knitwear and a coat for cooler weather, or paired with a strappy silk camisole and heels for an evening out.



The Valerie Skirt

The Albo Micro-Flare Pants

Our final capsule wardrobe must-have? A flattering black pant you can enjoy now and wear for years to come. Step into style in the Albo Micro-Flare Pants in luxuriously soft silk charmeuse. This micro-flare pant is specially tailored to lengthen and slim the leg line for that legs-for-days look, and can be worn for a variety of occasions. Casual outing with friends? The 90s-inspired mid-rise silhouette with slanted pockets is kept effortlessly cool with a basic tee or cami and our signature shacket. Dressing for the office? The Albo Micro-Flare Pant is a smart workwear essential when paired with a button-down shirt or knitwear.





The Albo Micro-Flare Pants

At LILYSILK, we encourage customers to shop smarter by investing in quality pieces that can be styled into diverse looks and therefore worn more frequently. Our collections are classic and simple, designed to be enjoyed for years to come to reduce waste. It's part of our promise to provide natural premium silk products that help you cherish life by experiencing the ultimate comfort in every passing moment.

A GUIDE TO EFFORTLESS WORKLEISURE OUTFITS

We're all familiar with business casual dress code, but have you heard of workleisure? The latest evolution in professional attire, workleisure is a comfier, chicer, and modern update to traditional business casual dress code. Whether you're dressing for a Zoom meeting or working in-office, LILYSILK's Spring 2022 collection of smart-casual styles in feel-good fabrics transition effortlessly from living room to board room, and everywhere in between.

Bring your in-office A-game

Crafted from a stretchy silk knit that's as flexible as your office's new hybrid work schedule, the Timeless Mei Silk Knit Polo is a sporty and figure-flattering silhouette that can easily be styled from afternoon meetings to after-work tennis lessons. Style the v-neckline with a delicate necklace for a preppy flair, and pair with a structured silk trouser for professional poise. Enjoying a weekend round of golf? A pleated skirt completes the look. Attending an after-hours sporting event with coworkers? This polished polo pairs perfectly with denim and sneakers for a winning game-day ensemble.



The art of layering

When it comes to comfortable workleisure, smart layering is key. We love our silk Anemeno vest 8285 as a fresh update to your existing office attire. Bring new life to your well-loved blouses by layering them under this perfectly preppy vest inspired by the classic men's pullover. Influenced by art deco flair, the argyle patterns, rhomb patterns, and contrasting ribbed edges add poise and personality, while the uber-soft blend of silky yarn ensures you'll stay cozy throughout the day. An ideal companion for cooler spring days, leave your jacket at home and instead style the Anemeno vest over a chic long-sleeved silk shirtdress during a lunchtime outing with coworkers, after-work happy hour, (or as an added layer of warmth when the in-office AC is set just a touch too chilly!)



Silk Knit Anemeno Vest

A (silk!) set for success

From in-office to out-on-the-town, our matching Pine top halter 9766 and Ginkgo pants 9765 are a quality combination of comfort and style. Inspired by art deco style's effortlessly luxurious aesthetic, the two pieces can be worn as a matching set or as workleisure separates.

We love the Pine top's silhouette with a pussycat bow tie that can be fastened at the front or side of the neck. For a smart in-office look, fasten the bow at the front and pair with a matching navy blazer and white trousers. Scheduled a dinner date after work? Add the Ginkgo pant with a strappy heel for a fun and flirtatious look. Tailored at the hip with wide legs and a subtle side split for a legs-for-days effect, the matching Ginkgo pant is comfortable enough to wear lounging at home, but the subtle diamond pattern makes it stylish enough to wear in-office when tucked into a white or navy silk blouse and paired with a matching pump.

